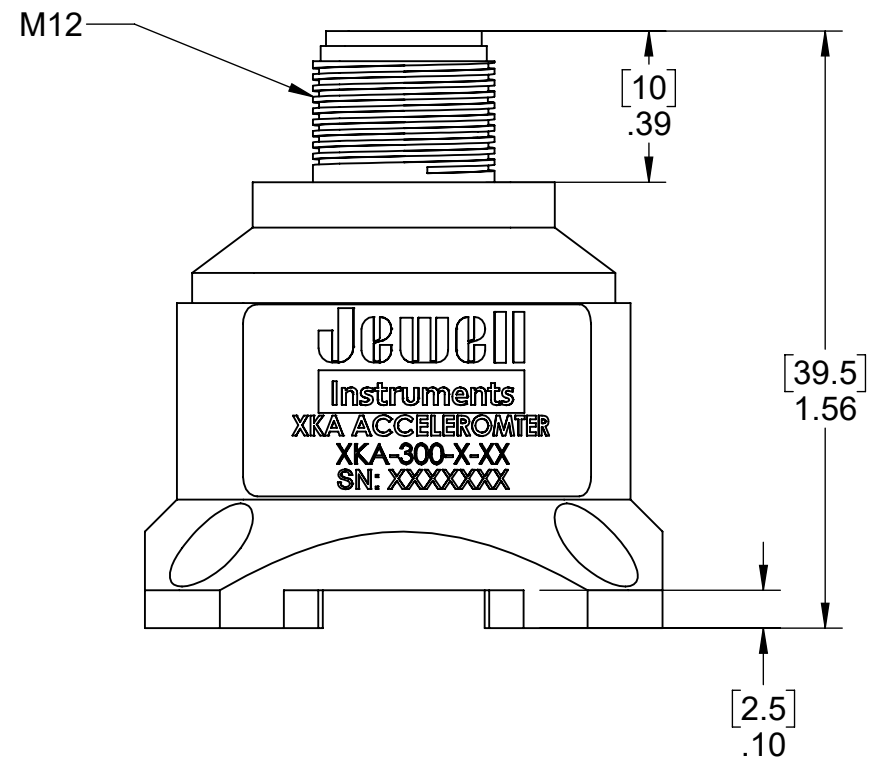
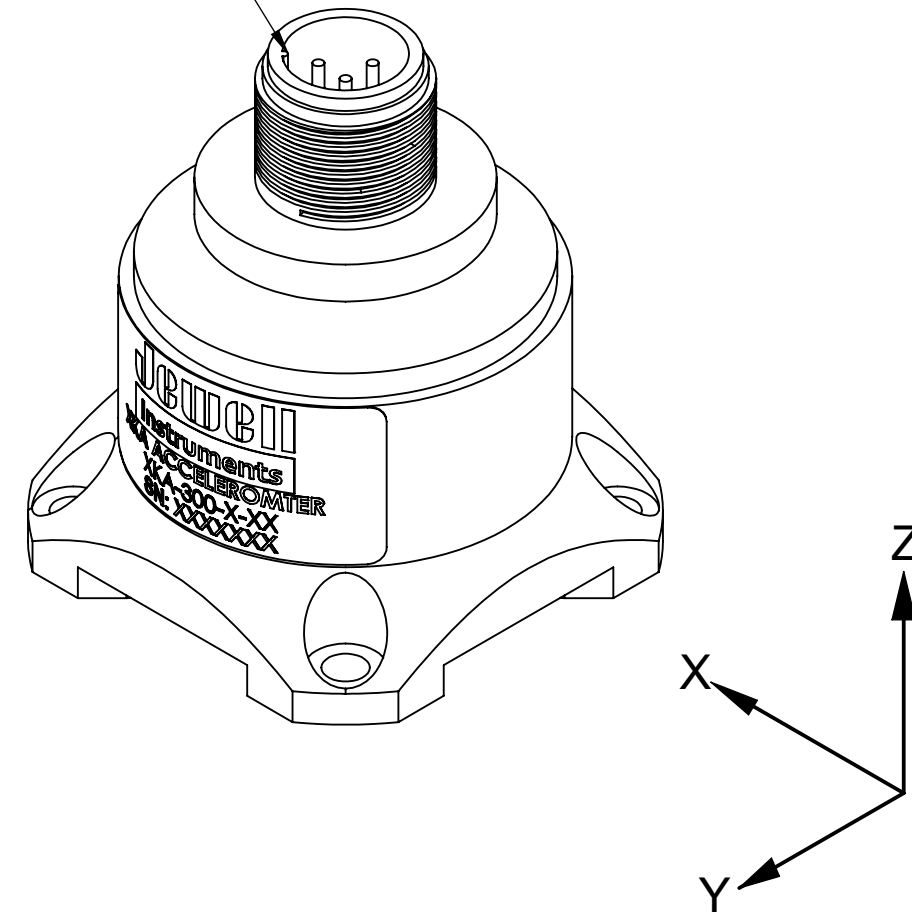
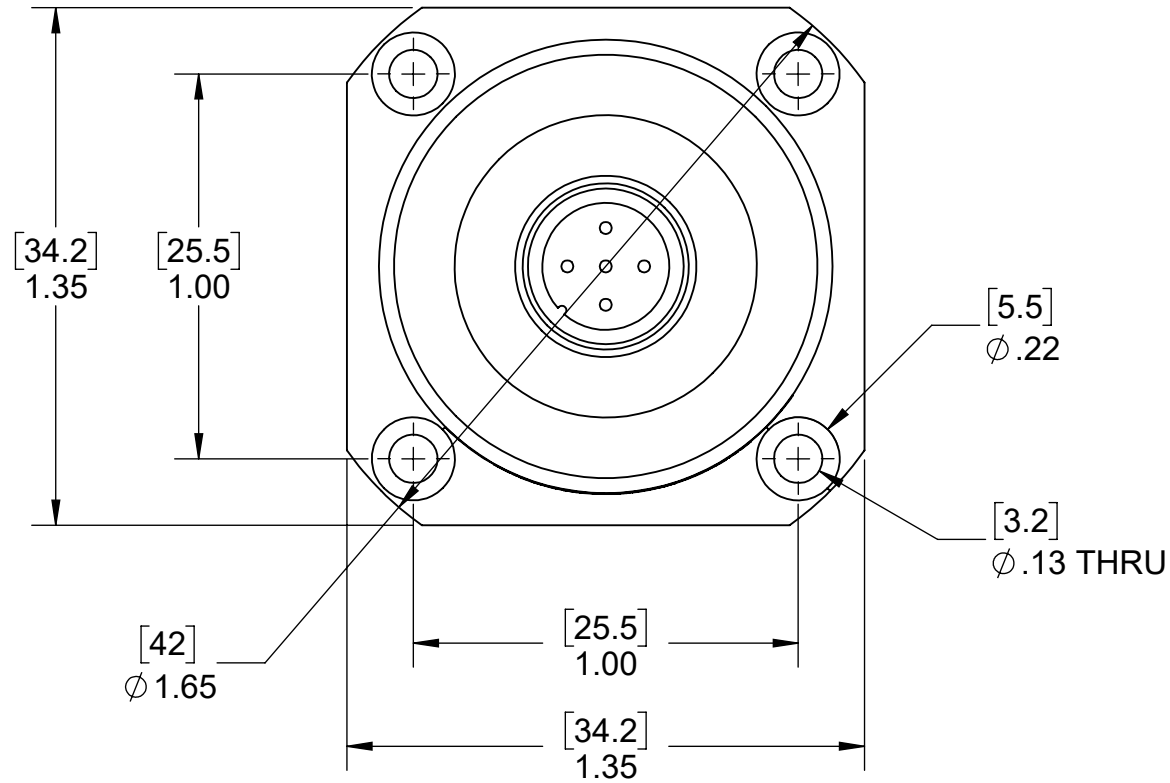


REVISIONS				
REV.	DESCRIPTION	ECO #	DATE	ENGINEER
A	RELEASE	30362	9/21/2021	TAD
B	CORRECTED AXIS DEPICTION	30640	9/14/2022	DWK

NOTE KEYWAY LOCATION



PIN	SC MODEL (VOLTAGE OUTPUT)	LC MODEL (CURRENT OUTPUT)	RS232	RS485	RS485 MODBUS	DIGITAL TTL
1	9-36V	9-36V	9-36V	9-36V	9-36V	9-36V
2	X-AXIS OUTPUT	X-AXIS OUTPUT	RXD	D+	D+	D+
3	Y-AXIS OUTPUT	Y-AXIS OUTPUT	TXD	D-	D-	D-
4	GND	GND	GND	GND	GND	GND
5	Z-AXIS OUTPUT	Z-AXIS OUTPUT	N/C	N/C	N/C	N/C

MATERIAL	DIMENSIONS UNITS ARE: [mm] INCH	 Jewell Instruments MANCHESTER, NH TRIPLETT MODUTEC A&M EMICO	TITLE AKA, DKA OUTLINE DRAWING	
FINISH	TOLERANCE UNLESS SPECIFIED TWO PLACE DECIMALS .00 ± .01 THREE PLACE DECIMALS .000 ± .005 ANGLES ± 1°		DRAWING NO. OD02550422	REV. B
CHECKED BY MAF DATE 10/6/21	DRAWN BY TAD DATE 9/21/2021	PROPRIETARY NOTICE THIS DRAWING IS THE PROPERTY OF JEWELL INSTRUMENTS, LLC. NEITHER THIS DOCUMENT NOR THE DATA CONTAINED HEREIN SHALL BE DISCLOSED, REPRODUCED IN WHOLE OR IN PART WITHOUT THE WRITTEN AUTHORIZATION OF JEWELL INSTRUMENTS, LLC. NO RIGHT IS GRANTED TO DISCLOSE OR SO USE ANY INFORMATION CONTAINED HEREIN. ALL RIGHTS RESERVED.	SCALE 2:1	CAGE CODE 33005
APPROVED BY JES DATE 10/13/21			SHEET 1 OF 1	