

Windo-mount™ is a sophisticated design that has been found universal acceptance since being introduced many years ago by Modutec. The W series meters are easily installed per applications bulletin AB6-1; when so installed the meter cover is flush with the panel surface, with the dial easily read.

W series meters are available in the same ranges and at the same prices as the S series meters. They offer excellent functional appearance, plus the looks enhancing edge options available. These meters are very popular for stereo and broadcast equipment.

Features:

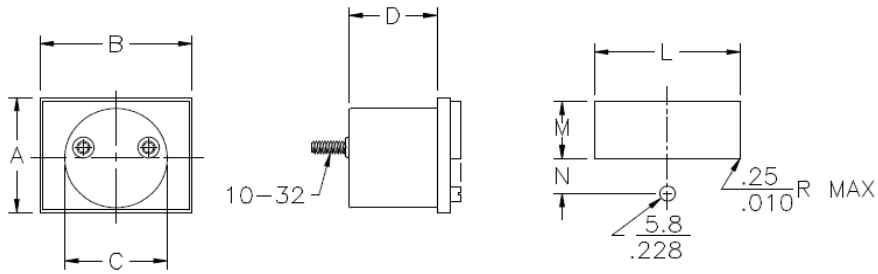
- Available with DC, AC Iron Vane, and AC Rectified inputs
- DC: μ a, mA, A, mV, V, Pyrometer (Thermocouple), DVU
- AC: mA, A, V, VU Frequency
- Custom designed inputs and scales available

Performance

Accuracy*	$\pm 2\%$ DC; $\pm 2\%$ AC - iron vane; $\pm 3\%$ AC - rectifier type (60Hz sine wave)	
Tracking*	$\pm 1 \frac{1}{2}\%$ DC; $\pm 2\%$ AC; vertical mounting	
Repeatability*	0.5% DC and rectifier; $\pm 2\%$ iron vane	
Response Time	1.5 seconds maximum for all ranges, except 0-50 μ A and below, where the response	
Symmetry*	$\pm 1.5\%$	
Resistance	$\pm 10\%$ DC and rectifier; $\pm 30\%$ iron vane	
Scale Arc	100° (iron vane 90°)	
Shielding	Self-shielded; no special calibration needed for steel or non-ferrous panel mounting,	
Meter Size	DC & Rectifier	Iron Vane
Scale Length - 1 ½"	1.75"	----
Scale Length - 2 ½"	2.41"	2.15"
Scale Length - 3 ½"	3.00"	2.70"
Scale Length - 4 ½"	4.22"	3.80"
Scale Length - 5 ½"	5.12"	----

*Percent of full scale. On zero center meters, specification applies to full scale, not end scale values, e.g., 50-0-50 μ A is 100 μ A full scale.

Outline Drawing - W Series



W Series panel cutout
 $\frac{+.25/-0.00}{+.010/-0.000}$

Dimensional Data - W Series

		A	B	C	D	L	M	N
1W	mm.	45.0	57.4	38.36	33.0	54.6	23.7	13.3
	in.	1.77	2.26	1.51	1.30	2.150	.935	.525
2W	mm.	58.2	76.5	54.1	33.0	73.7	32.3	16.1
	in.	2.29	3.01	2.13	1.30	2.900	1.270	.633
3W	mm.	73.7	94.7	59.7	33.0	91.7	40.5	20.5
	in.	2.90	3.73	2.65	1.30	3.610	1.595	.804
4W	mm.	103.1	131.6	67.3	33.0	127.5	59.6	21.7
	in.	4.06	5.18	2.65	1.30	5.020	2.345	.856
5W	mm.	116.8	151.6	67.3	33.0	146.8	65.9	32.5
	in.	4.60	5.97	2.65	1.30	5.780	2.595	1.280

Available Options

How to Order

Suffix	Option	W
A	Improved Accuracy ¹	●
-	Bezel Mount Kits ("BA")	
B	4-stud Mounting	
C	Colors, Meter Cover & Bezel	●
D	Blank Dials	●
DD	Opaque Dials	*
E	Custom Resistance ^{1 2}	●
F	Fast Response ^{1 2}	●
G	Custom Pointers	●
IEC	ANSI Symbols on Dial	●
KW	Illumination	● ³
M	Mirror Scale	●
NL	Heavy Damping ³	●
NS	Untacked Covers	●
P	Single Point Calibration	●
R	Improved Resistance	●
S	Sealed Case	●
T	Temperature Compensation ¹	●
U	Unit Meter Packaging	●
V	High Resistance Voltmeters ¹	●
X2	Metric Studs & Terminals	●
Y	Insulated Terminals	●
Z	Rear Zero Adjust ¹	●

Please refer to the Series S & W Catalog. When placing an order, replace the □ in the catalog number with a "W". Mention any options you would like to add to your meter.

Panel Meter Sales Contact Information

Toll Free 800-638-3771

meters@jewellinstruments.com

Notes: ¹ Not available on AC types. ² Extra time required for set up. ³ Not available on iron-vane types. * Furnished as standard. ● Option Available