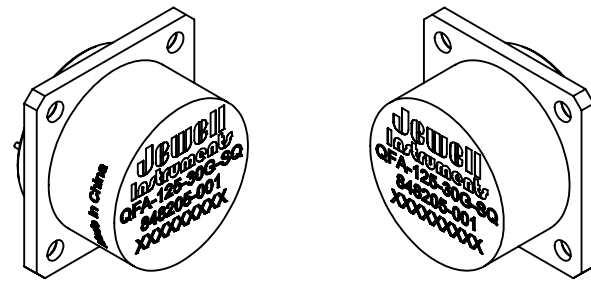
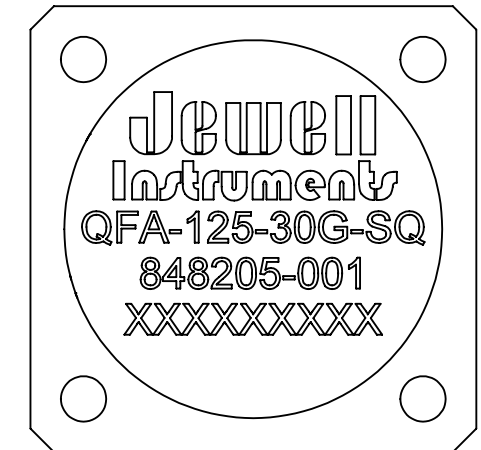
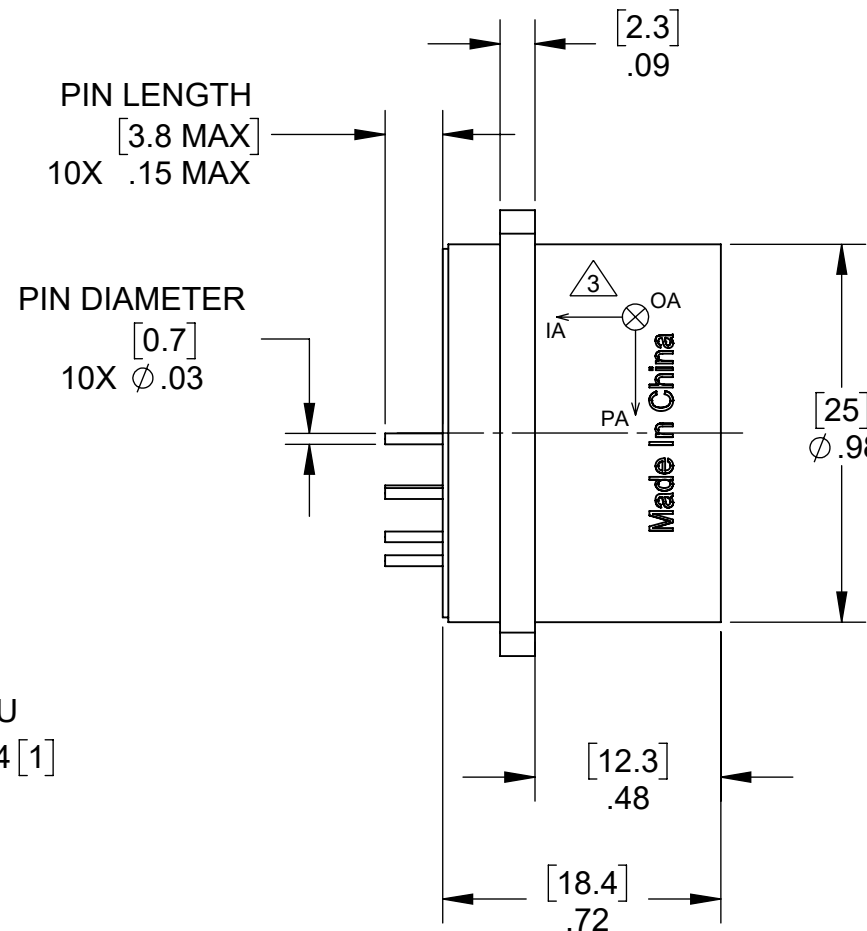
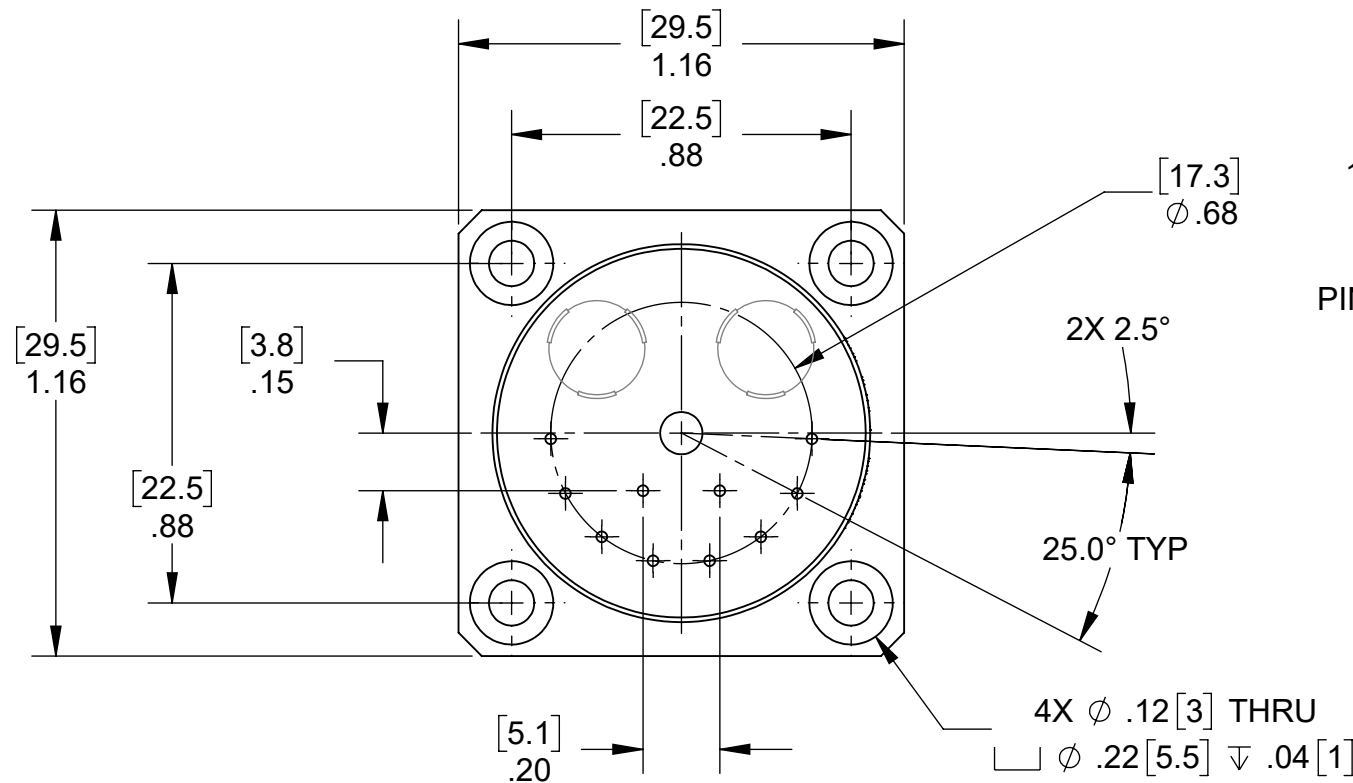


NOTES:

1. OPERATING TEMPERATURE: -55°C TO +125°C
2. INPUT VOLTAGE: ±12 TO ±18
3. \triangle IA = SENSITIVE (INPUT) AXIS
 OA = OUTPUT (HINGE) AXIS
 PA = PENDULOUS AXIS
4. INPUT CURRENT (QUIESCENT): 20 mA
5. WEIGHT (GRAMS): 55 NOM.
6. UNITS: $\frac{[mm]}{[Inch]}$



SCALE 1:1



PIN ASSIGNMENT	
PIN	DESCRIPTION
1	CURRENT OUTPUT (SIGNAL OUT)
2	FACTORY USE
3	-15 VDC
4	+15 VDC
5	FACTORY USE
6	TEMPERATURE SENSE OUTPUT (IuA/K)
7	FACTORY USE
8	SIGNAL & POWER RETURN
9	FACTORY USE
10	FACTORY USE

APPLICATION		DIMENSIONS ARE IN INCHES AND APPLY TO PART BEFORE FINISHING	
USED ON	NEXT ASSY	TOLERANCE UNLESS SPECIFIED	
		TWO PLACE DECIMALS (.00) ± .01	
		THREE PLACE DECIMALS (.000) ± .005	
		ANGLES ± 1°	
		RAW MATL - COMMERCIAL STANDARD	
MATERIAL	NA	DRAWN	DATE
		RP	10/29/2014
		CHECKER	DATE
		NCD	06/27/2013
FINISH	NA	APPROVED	DATE
		GD	07/09/2013



MANCHESTER, NH
 TRIPLETT MODUTEC A&M EMICO

PROPRIETARY NOTICE
 THIS DRAWING IS THE PROPERTY OF JEWELL INSTRUMENTS, LLC. NEITHER THIS DOCUMENT NOR THE DATA CONTAINED HEREIN SHALL BE DISCLOSED, REPRODUCED IN WHOLE OR IN PART WITHOUT THE WRITTEN AUTHORIZATION OF JEWELL INSTRUMENTS, LLC. NO RIGHT IS GRANTED TO DISCLOSE OR SO USE ANY INFORMATION CONTAINED HEREIN. ALL RIGHTS RESERVED.

TITLE	
QFA-125-30G-SQ OUTLINE DRAWING	
DRAWING NO.	REV
OD848205-001	E
SCALE	CAGE CODE
2:1	33005
SHEET 1 OF 1	