



Analog Sensors

Digital Sensors

AML Series



- Single and Dual Axis Available
- **Resolution <0.05°**
- **Zero Temp Coefficient ±0.02°/°C**
- High Shock & Vibration Tolerance
- Analog 0-5V, 0.5-4.5V & 4-20mA Output Options
- -40° to +85° C Temp Range

- Solar Tracking & Panel Positioning
- Vehicle Wheel Alignment
- Industrial Automation & Control
- Radar/Antenna Mast Alignment
- Platform Leveling
- Navigation Pitch/Roll Measurement

AMS Series



- Single and Dual Axis Available
- **Resolution <0.01°**
- **Zero Temp Coefficient ±0.01°/°C**
- High Shock & Vibration Tolerance
- Analog 0-5V, 0.5-4.5V & 4-20mA Output Options
- Up to ±90° Full Range Output

- Boom Position and Control
- Radar and Vehicle Platform Positioning
- Industrial Measurement & Control
- Drilling Equipment
- Navigation Pitch/Roll Measurement

JMI Series



- Single and Dual Axis Available
- **Resolution to 0.002°**
- **RoHS Compliant**
- Lightweight Aluminum Enclosure
- Temperature Sensors Option Available

- Industrial Automation & Control
- Construction & Agricultural Equipment
- Platform Leveling/Positioning
- Railway Track Alignment & Maintenance

AMH Series



- Single and Dual Axis Available
- **Resolution <0.001°**
- **Zero Temp Coefficient ±0.006°/°C**
- High Shock & Vibration Tolerance
- Analog 0-5V, 0.5-4.5V & 4-20mA Output Options
- -40° to +85° C Temp Range

- Radar & Vehicle Platform Leveling
- Drill Rig Alignment
- Offshore/Subsea Platform Pitch & Roll
- Industrial Measurement & Control

AMI Series



- Single and Dual Axis Available
- **Resolution <0.001°**
- **Zero Temp Coefficient ±0.002°/°C**
- Excellent Performance over Temp
- Analog 0-5V, 0.5-4.5V & 4-20mA Output Options
- -40° to +85° C Temp Range

- Radar & Vehicle Platform Leveling
- Drill Rig Alignment
- Offshore/Subsea Platform Pitch & Roll
- Industrial Measurement & Control

DML Series



- Single and Dual Axis Available
- **Resolution <0.05°**
- **Zero Temp Coefficient ±0.02°/°C**
- -40° to +85° C Operation and Storage
- Digital RS232, RS485 or UART TTL Outputs

- Solar Tracking & Panel Positioning
- Vehicle Wheel Alignment
- Industrial Automation & Control
- Radar/Antenna Mast Alignment
- Platform Leveling
- Navigation Pitch/Roll Measurement

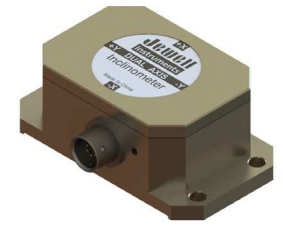
DMS Series



- Single and Dual Axis Available
- **Resolution <0.01°**
- **Zero Temp Coefficient ±0.01°/°C**
- Digital RS232 or RS485 and UART TTL Outputs
- -40° to +85° C Operating Range

- Boom Position and Control
- Radar and Vehicle Platform Leveling
- Drilling Equipment
- Navigation Pitch/Roll Measurement
- Industrial Measurement & Control

DMH Series



- Single and Dual Axis Available
- **Resolution <0.001°**
- **Zero Temp Coefficient ±0.006°/°C**
- Up to ±90° Angular Range
- -40° to +85° C Temperature Range

- Antenna Deflection Measurement
- Radar and Vehicle Platform Positioning
- Drill Rig Alignment
- Offshore Platform Pitch/Roll
- Industrial Measurement & Control

Features & Benefits

Applications

Performance Specs

Static/Dynamic

Angular Range ¹ (°):	±10	±30	±60	±90	±10	±30	±60	±90	±14.5	±30	±90	±10	±30	±60	±10	±30	±60	±90	±10	±30	±60	±90	±10	±30	±60	±90	±10	±30	±60	±90				
Resolution (°):	0.05				0.01				0.002			0.002			0.001			0.001			0.05				0.01				0.001					
Hysteresis:	0.1	0.1	0.2	0.2	0.02	0.05	0.08	0.1	0.014	0.007	0.004	0.005	0.008	0.01	0.003	0.005	0.008	0.1	0.1	0.2	0.2	0.02	0.05	0.08	0.1	0.005	0.008	0.01	0.005	0.008	0.01			
Zero Temp Coefficient, °/°C:	±0.02				±0.01				±0.004			±0.006			±0.002			±0.02				±0.01				±0.006								
Scale Factor Temp Coefficient (PPM/°C):	≤ 350				≤ 200				150			≤ 200			≤ 50			≤ 350				≤ 200				≤200			≤ 200			≤ 200		
Warm Up (s):	0.5				0.5				0.5			0.5			0.5			0.5				0.5				0.5			0.5					
Time Constant (s):	0.05				0.05				0.032			0.05			0.02			0.05				0.05				0.05			0.05					

Electrical & Environmental

Output:	0-5V, 0.5 - 4.5V or 4-20mA	0-5V, 0.5 - 4.5V or 4-20mA	± 5V, 0-5V or 4-20mA	0-5V, 0.5 - 4.5V or 4-20mA	0-5V, 0.5 - 4.5V or 4-20mA	5Hz, 15Hz, 35Hz, 50Hz	5Hz, 15Hz, 35Hz, 50Hz	5Hz, 15Hz, 35Hz, 50Hz
Output Type ² :						RS232, RS485 or TTL	RS232, RS485 or TTL	RS232, RS422, RS485 or TTL
Electromagnetic Compatibility:	EN61000 and GBT17626	EN61000 and GBT17626	N/A	EN61000 and GBT17626	EN61000 and GBT17626	EN61000 and GBT17626	EN61000 and GBT17626	EN61000 and GBT17626
Impact Resistance:		100g@11ms, 3 times/axis (½ sinusoid)	100 g, 0.011 sec, ½ sine	100g@11ms, 3 times/axis (½ sinusoid)	100g@11ms, 3 times/axis (½ sinusoid)	100g@11ms, 3 times/axis (½ sinusoid)	100g@11ms, 3 times/axis (½ sinusoid)	100g@11ms, 3 times/axis (½ sinusoid)
Vibration Resistance:	10grms @ 10-1000Hz	10grms @ 10-1000Hz	100 g, 0.011 sec, ½ sine	10grms @ 10-1000Hz	10grms @ 10-1000Hz	10grms @ 10-1000Hz	10grms @ 10-1000Hz	10grms @ 10-1000Hz
Temperature Rating, Operation:	-40 to +85 °C	-40 to +85 °C	-40 to +85 °C	-40 to +85 °C	-40 to +85 °C	-40 to +85 °C	-40 to +85 °C	-40 to +85 °C
Temperature Rating, Storage:	-55 to +100 °C	-55 to +125 °C	-40 to +95 °C	-55 to +100 °C	-55 to +100 °C	-55 to +100 °C	-55 to +125 °C	-55 to +100 °C
Enclosure:			Anodized Aluminum	Anodized Aluminum	Anodized Aluminum			Anodized Aluminum
Seal:	IP67	IP67	IP65	IP67	IP67	IP67	IP67	IP67
Cables:	1m Cable (standard)	1m Cable (standard)	N/A	1m Cable (standard)	1m Cable (standard)	1m Cable (standard)	1m Cable (standard)	1m Cable (standard)
Weight:	90g (without cable)	120g (without cable)	165 (1 axis), 170 (2 axes)	150g (without cable)	150g (without cable)	90g (without cable)	120g (without cable)	150g (without cable)
Power Requirements:	9-36 VDC @ 60mA	9-36 VDC @ 60mA	±12 to ±18 VDC (5V) 12 to 30 VDC (0-5V) 28mA (4-20mA)	9-36 VDC @ 60mA	9-36 VDC @ 60mA	9-36 VDC @ 60mA	9-36 VDC @ 60mA	9-36 VDC @ 60mA

Notes: 1 - Full range is defined as "from negative full input angle to positive full input angle." The inclinometer output is proportional to the sine of the tilt angle., 2 - Referenced to theoretical sine value independent of misalignment., 3 - Output phase angle = -90° 4 - Other ranges available upon request