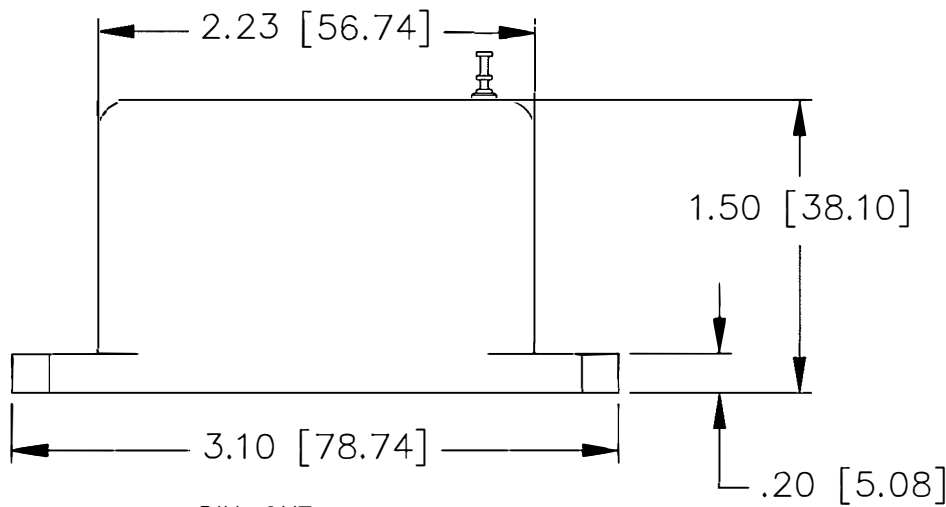
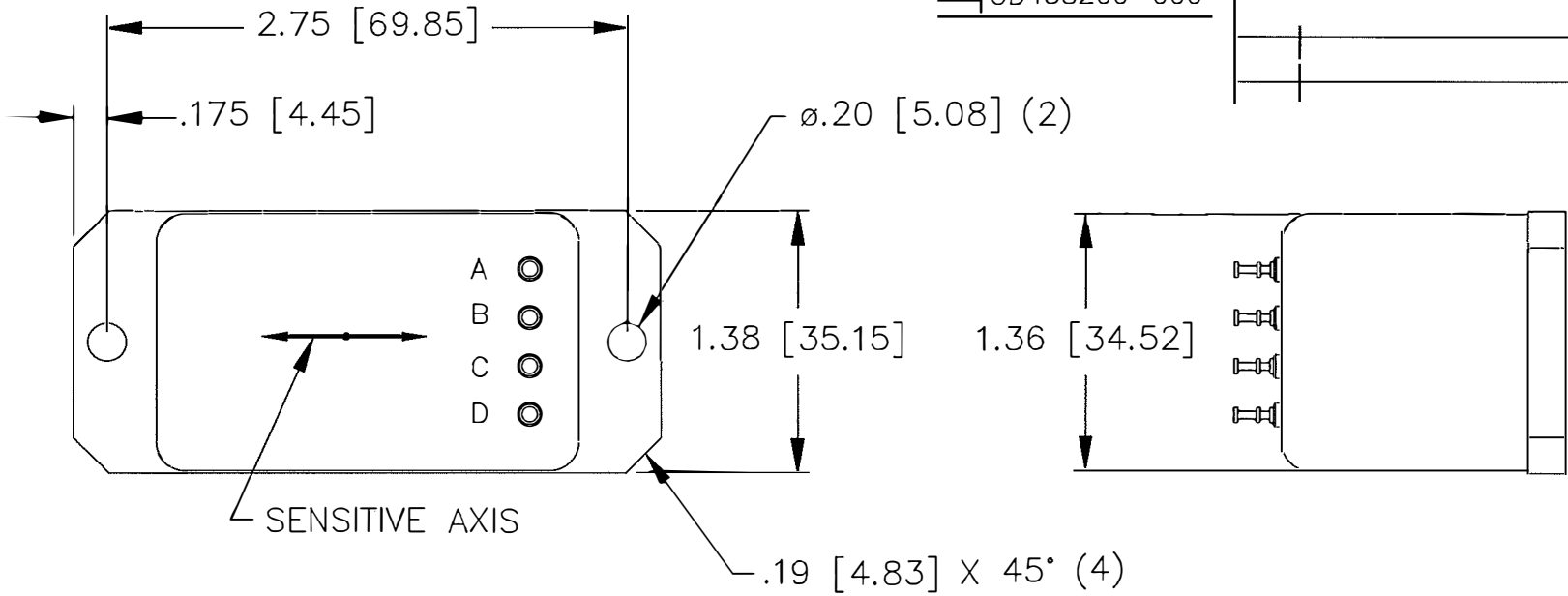


DWG. NO. **A** OD458200-000



PIN-OUT

|       |                |
|-------|----------------|
| PIN A | +12 TO +18 VDC |
| PIN B | -12 TO -18 VDC |
| PIN C | POWER/SIG COM  |
| PIN D | SIG OUTPUT     |

|   |               |            |     |           |
|---|---------------|------------|-----|-----------|
| TOLERANCE UNLESS SPECIFIED  |               | DRAWN BY   | DAP | 19-17-12  |
| TWO PLACE DECIMALS  | (.00) ± .01   | CHECKED BY | JAD | 19-17-12  |
| THREE PLACE DECIMALS  | (.000) ± .005 | ENGINEER   | ATC | 19-17-12  |
| ANGLES ± 1°   |               | USED ON    |     | NEXT ASSY |
| RAW MATERIAL - COMMERCIAL STANDARD  |               |            |     |           |
| DIMENSIONS ARE IN INCHES.   |               |            |     |           |
| MATERIAL  |               |            |     |           |
| FINISH  |               |            |     |           |
| THIS DRAWING COVERS A PROPRIETARY ITEM AND IS THE PROPERTY OF JEWELL ELECTRICAL INSTRUMENTS INC. THIS DRAWING IS NOT TO BE COPIED OR USED WITHOUT PERMISSION. |               |            |     |           |

OUTLINE, ACCEL  
LCF-200 SERIES

|                        |               |
|------------------------|---------------|
| <b>JEWELL</b>          |               |
| JEWELL INSTRUMENTS LLC |               |
| MANCHESTER             | NEW HAMPSHIRE |
| DWG. NO.               |               |
| OD458200-000           |               |
| CODE 33005             | CAT. NO.      |

SCALE EPA NO. 11778