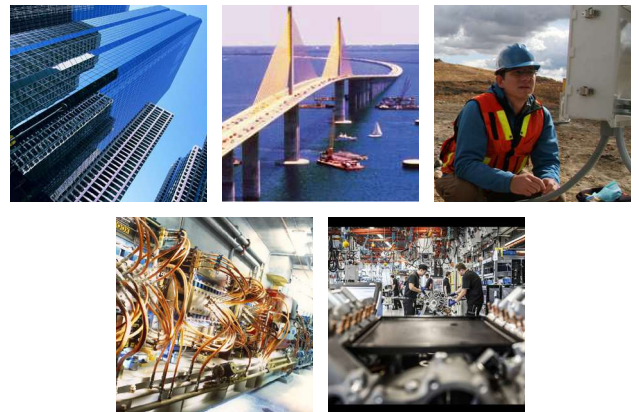
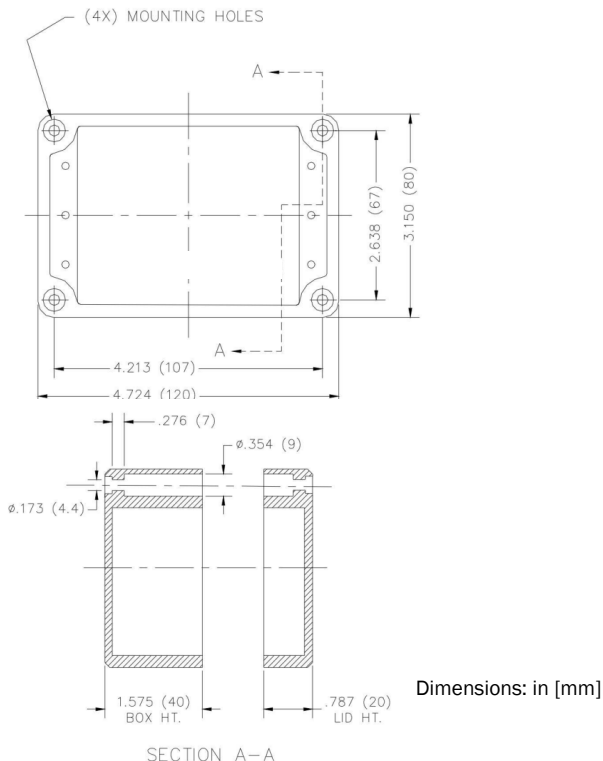


Model C801

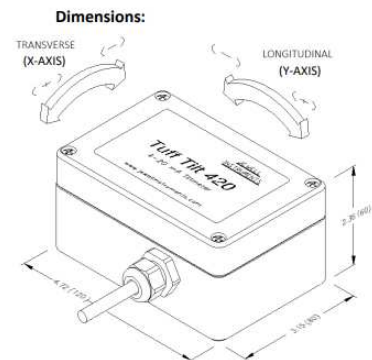
“Tuff Tilt” Analog Tiltmeter

The model C801 “Tuff Tilt 420” delivers the same precision and durability of our A801, but with 4-20mA output. Units are available in single axis (uniaxial), and dual axis (biaxial) tilt configurations. The Tuff Tilt 420 is current loop powered, so tilt measurements are made using an economical 2-wire pair, and because output is 4-20mA there is no signal loss over long cables. Units also include an on-board thermistor for temperature measurements. All units are rated IP65 waterproof for advanced protection from the elements. Use the C801 for structural monitoring, 4-20mA PLC systems, industrial measurement and control, or anywhere long cable runs are necessary.



APPLICATIONS:

- Structural Monitoring
- Platform Leveling
- Industrial Measurement & Control



PERFORMANCE SPECIFICATIONS

PERFORMANCE

ANGULAR RANGE (°) ¹	±0.5°	±3°	±50°
RESOLUTION	<0.0001°	0.0006°	0.01°
NONREPEATABILITY (° max)	<0.0002°	0.001°	0.02°
NONLINEARITY (%FRO) ² max	±1	±2	±0.5
SCALE FACTOR	0.0625°/mA	0.375°/mA	6.25°/mA
TIME CONSTANT	0.15 sec		
Kz TEMP COEFFICIENT (°/°C)	±0.0002 °/°C (typical)		±0.002 °/°C (typical)
Ks TEMP COEFFICIENT (%/°C)	<0.04%/°C (typical)		<0.1%/°C (typical)
OUTPUT	4-20mA Two-wire current loop (per axis)		
CHANNELS	Tilt, Temperature		

ELECTRICAL & ENVIRONMENTAL

NUMBER OF AXES	1 or 2
OUTPUT IMPEDANCE (Ohms, nominal)	270
TEMPERATURE OUTPUT	Temperature is measured with a 2500 Ohm thermistor, -50° to 150°C range
POWER	8-18 VDC @ 8mA, 250 mV ripple max, reverse polarity protected
OPERATING TEMPERATURE RANGE	-40° to +85° C
STORAGE TEMPERATURE RANGE	-40° to +85° C
WEIGHT	0.6 kg (1.5 lb.)
MATERIALS	Diecast painted aluminum
SEAL	IP65
CABLE	3m (10 ft) 6 conductor + one overall shield, PVC jacket, tined ends

PIN OUT:

Single Axis

WIRE COLOR	FUNCTION
RED	+VIN
BLACK	GND
WHITE	SIG GND
GREEN	+X
BLUE	-X
YELLOW	TEMP

Biaxial

WIRE COLOR	FUNCTION
RED	+VIN
BLACK	GND
WHITE	SIG GND
GREEN	+X
GRAY	-X
YELLOW	TEMP
BLUE	+Y
BROWN	-Y

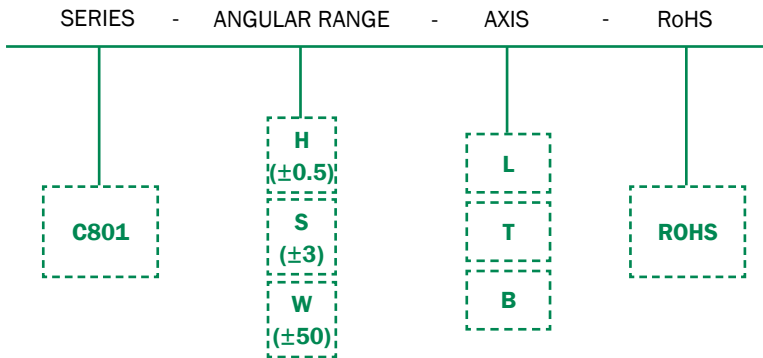
NOTES:

1. Custom ranges available on request
2. Nonlinearity is specified as deviation of output referenced to theoretical sine function value, independent of misalignment

Specifications are subject to change without notice due to continued product development

ORDERING INFORMATION

HOW TO ORDER Model Numbers are comprised of the series, the number of axes, and the angular range.



	MODEL #	PART #
±0.5	C801-HL-ROHS	98008-04-ROHS
	C801-HT-ROHS	98008-01-ROHS
	C801-HB-ROHS	98008-08-ROHS
±3	C801-SL-ROHS	98008-05-ROHS
	C801-ST-ROHS	98008-02-ROHS
	C801-SB-ROHS	98008-09-ROHS
±50	C801-WL-ROHS	98008-06-ROHS
	C801-WT-ROHS	98008-03-ROHS
	C801-WB-ROHS	98008-10-ROHS

Accessories:

PART #	DESCRIPTION
00389	Extra 8-socket Female in-line connector, Neoprene, on 24-inch (60 cm) Cable Whip (bare wire leads)
00359	Extra Delrin Locking Sleeve (locks 00358 and 00389 in-line connector to Male bulkhead)
00358-xxx	Extra 6-socket Female in-line connector, Neoprene, (bare wire leads) price per foot

850 Perimeter Road Manchester, NH 03103 USA

SENSORS: 800.227.5955

www.jewellinstruments.com | sensors@jewellinstruments.com

© Jewell Instruments 2020

Jewell
Instruments

ISO9001
CERTIFIED