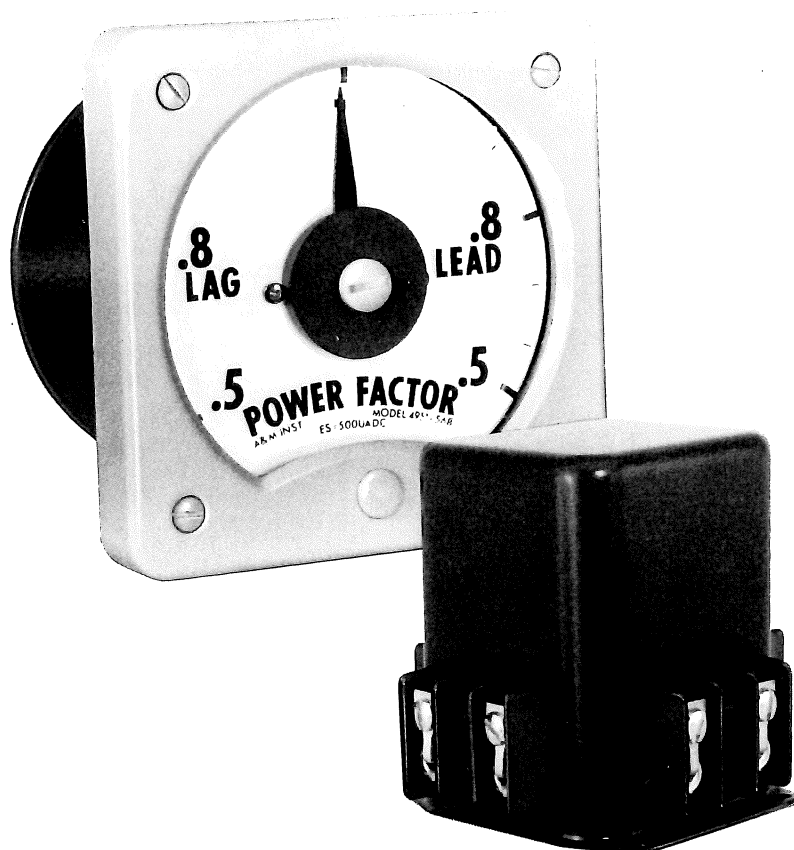
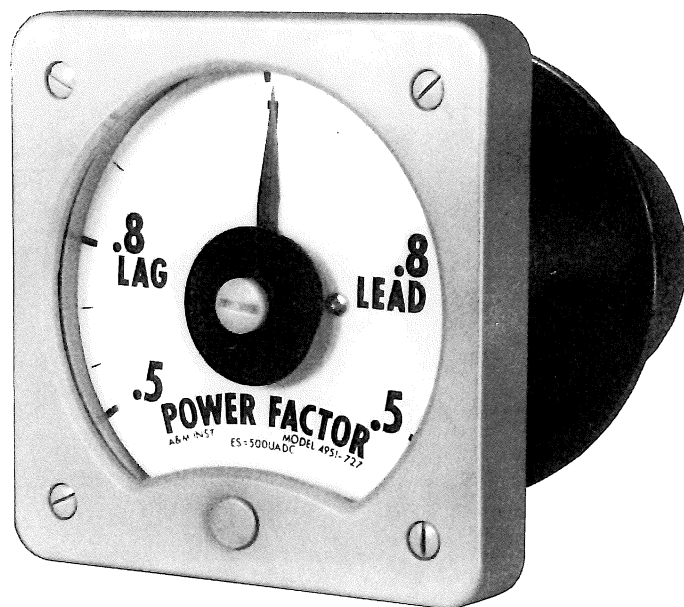


HI-SHOCK SWITCHBOARD INSTRUMENTS

POWER-FACTOR METERS



Model 4951-568



Model 4951-727

The A&M Model 4951 power factor meters are designed to meet the requirements of MIL-M-19261 and MIL-M-16034. They are supplied as either self-contained or as a "matched-set" with external transducer. In the external transducer configuration the transducer is matched to the meter. Both configurations are sealed watertight.

Configuration	Model Number
Meter with External Transducer Matched to Meter	4951-568
Self-Contained	4951-727

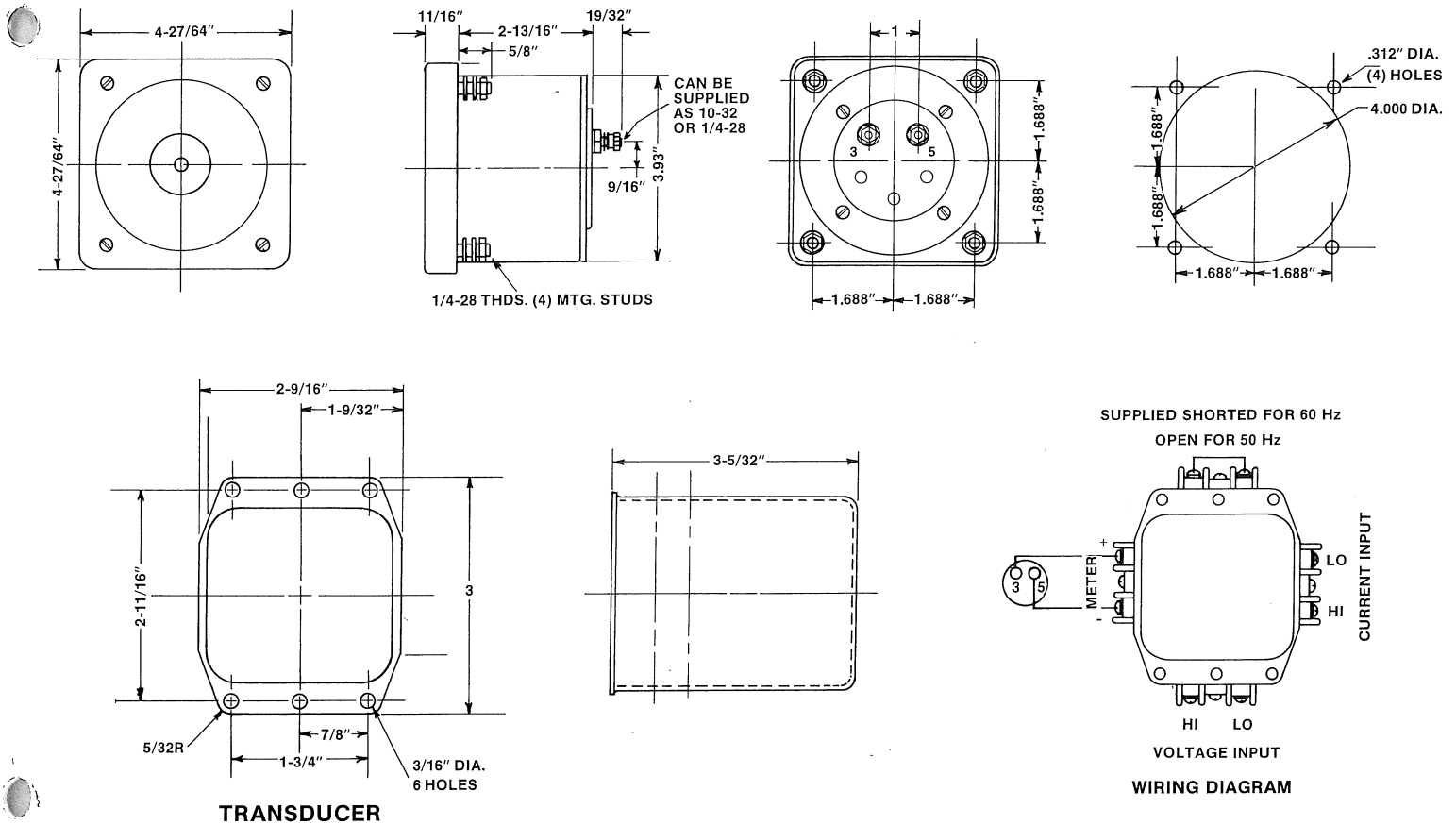
Models 4951-568 and 4951-727 are designed to meet the requirements of MIL-M-19261.

SPECIFICATIONS:

Potential Input:	
Voltage:	85-135VAC Single Phase
Burden:	5VA
Overload:	150VAC Max.
Current Input:	
Current:	0.001 to 5AAC Single Phase
Burden:	1VA
Overload:	15AAC Max.
Accuracy:	± 0.025 @ 0.5 PF ± 0.007 @ 1.0 PF
Frequency:	60 Hz (Shorted Frequency Terminals, as Shipped) 50 Hz (Open Frequency Terminals)
Temperature:	
Operating:	-20°C to +65°C
Storage:	-65°C to +100°C
Dielectric Test:	1500 VRMS
Transducer Input:	-0.5mADC to +0.5mADC (Transducer Matched to Meter)

HI-SHOCK SWITCHBOARD INSTRUMENTS

MODEL 4951-568 (Matched Set)



MODEL 4951-727 (Self-Contained)

