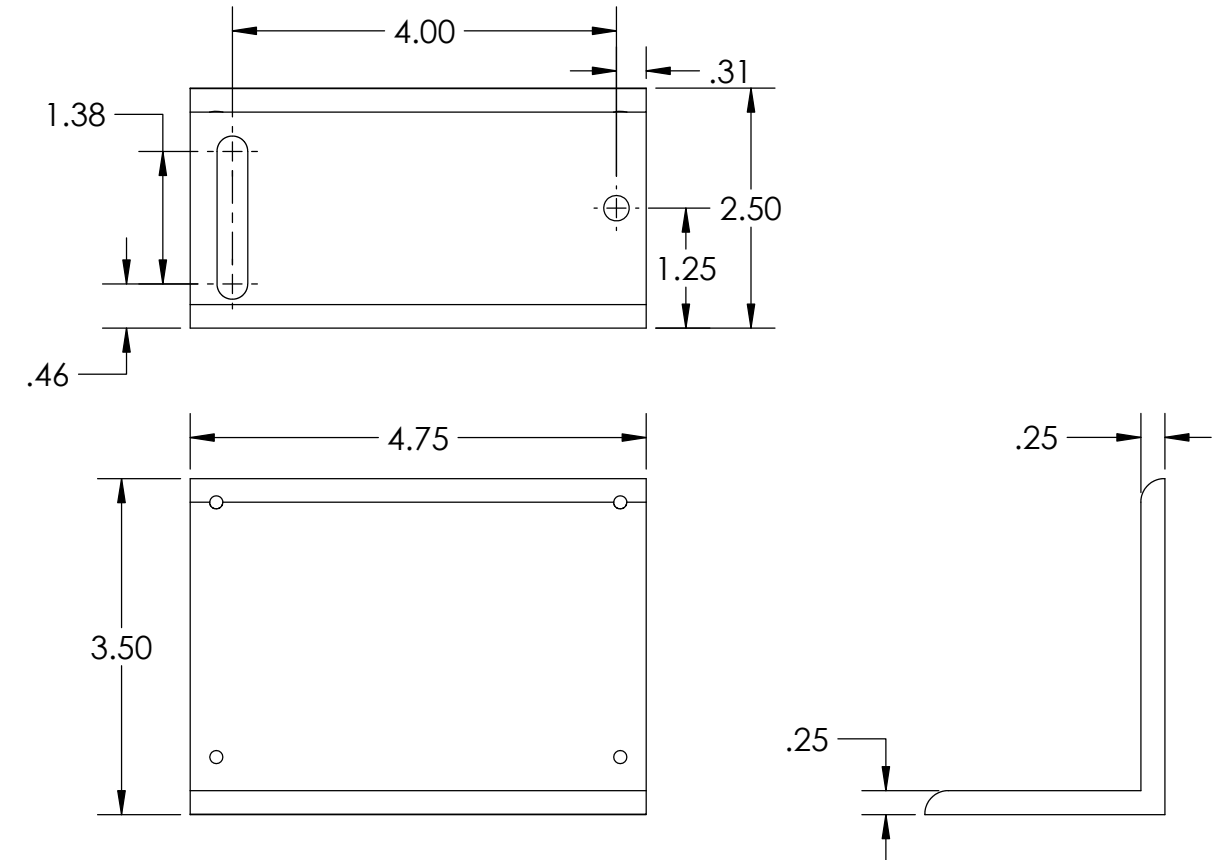
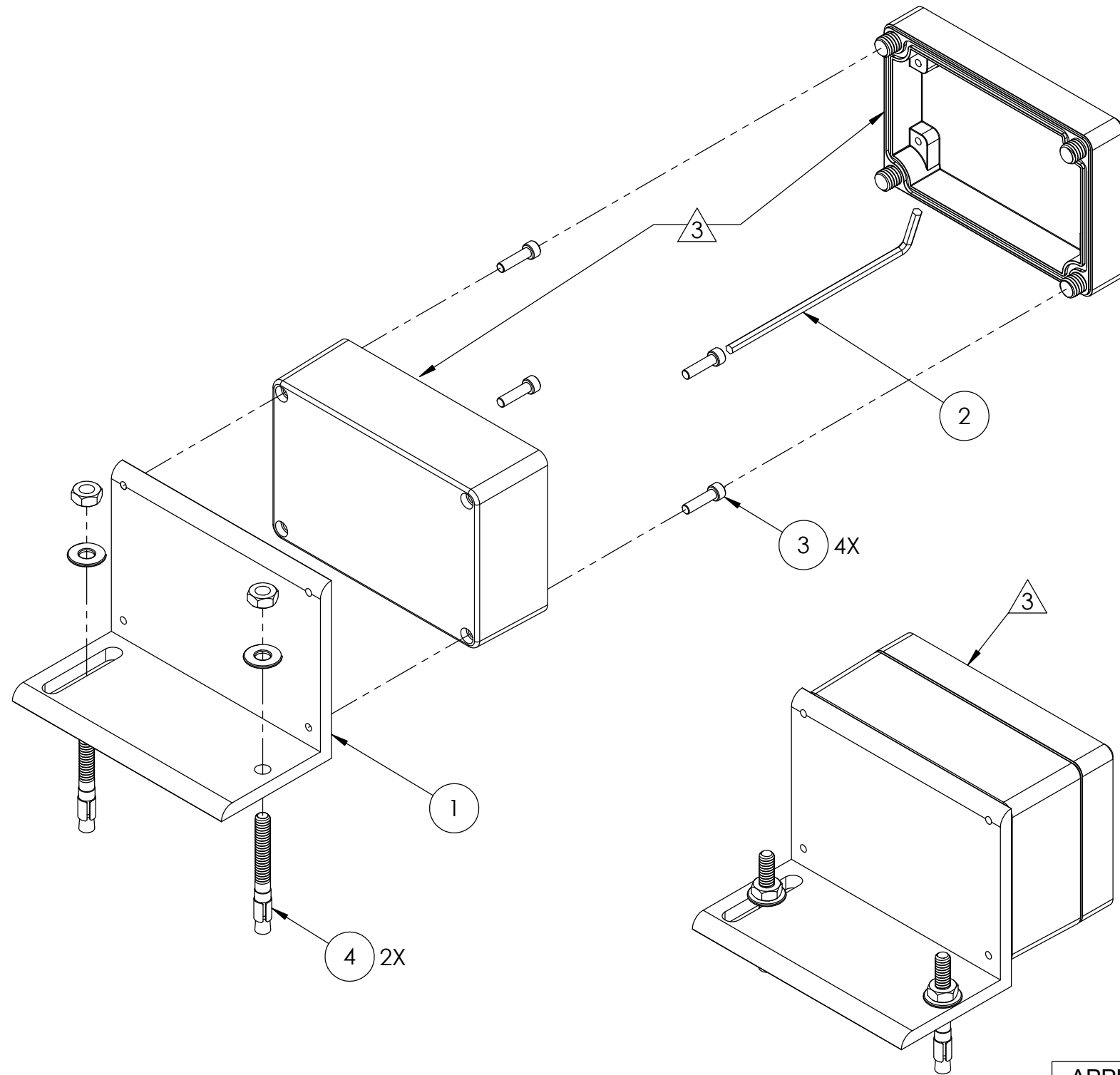


- NOTE:
- ITEMS 1 THRU 4 TO BE IN ZIP-LOCK BAG & LABELED, WITH VERTICAL MOUNTING BRACKET PART NUMBER.
 - CONFIGURATION IS FOR SUGGESTED ASSEMBLY ONLY. PARTS ARE NOT ASSEMBLED WHEN PACKING FOR SHIPPING.
 - ENCLOSURE SHOWN FOR ASSEMBLY PURPOSES ONLY

REVISIONS					
ZONE	REV.	DESCRIPTION	DATE	ECO	DRFTSPRSN
	A	RELEASED TO PRODUCTION	5/09/2013	25378	GLP
	B	REDRAWN IN SOLIDWORKS; UPDATED DRAWING TO SHOW HOW TO ASSEMBLE AND PLATE DETAILS	2/7/2025	31562	GR



ITEM NO.	PART NUMBER	DESCRIPTION	QTY.
1	01439	MOUNTING BRACKET, VERTICAL	1
2	00195-03	ALLEN WRENCH	1
3	00210-49	SHCS, 8-32x5/8" SS	4
4	00294-01	ANCHOR BOLT (MASONRY)	2

APPLICATION		DIMENSIONS ARE IN INCHES AND APPLY TO PART BEFORE FINISHING	
USED ON	NEXT ASSY	TOLERANCE UNLESS SPECIFIED	
		TWO PLACE DECIMALS (.00) ± .01	
		THREE PLACE DECIMALS (.000) ± .005	
		ANGLES ± 1°	
		RAW MATL - COMMERCIAL STANDARD	
DRAWN	GLP	DATE	1/23/2025
CHECKER	DM	DATE	5/9/2013
APPROVED	DAP	DATE	5/9/2013

Jewell
Instruments

MANCHESTER, NH
MODUTEC A&M EMICO

PROPRIETARY NOTICE
THIS DRAWING IS THE PROPERTY OF JEWELL INSTRUMENTS, LLC. NEITHER THIS DOCUMENT NOR THE DATA CONTAINED HEREIN SHALL BE DISCLOSED, REPRODUCED IN WHOLE OR IN PART WITHOUT THE WRITTEN AUTHORIZATION OF JEWELL INSTRUMENTS, LLC. NO RIGHT IS GRANTED TO DISCLOSE OR SO USE ANY INFORMATION CONTAINED HEREIN. ALL RIGHTS RESERVED.

TITLE	
VERTICAL MOUNTING BRACKET	
DRAWING NO.	REV
AD81439-00	B
SCALE	CAGE CODE
1:2.2	33005
SHEET 1 OF 1	