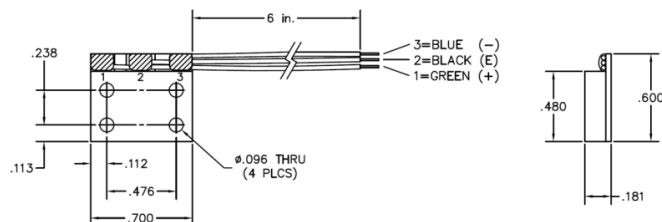
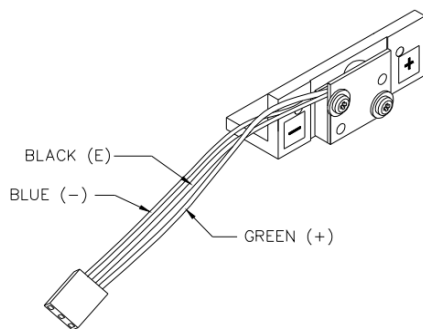


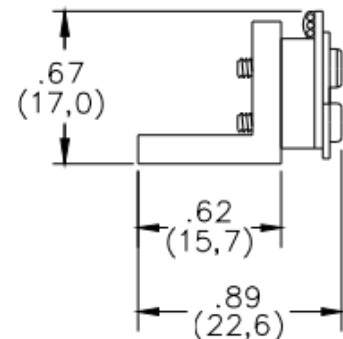
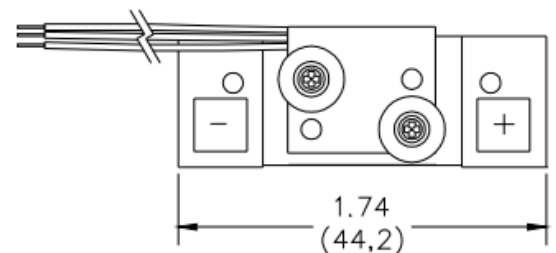
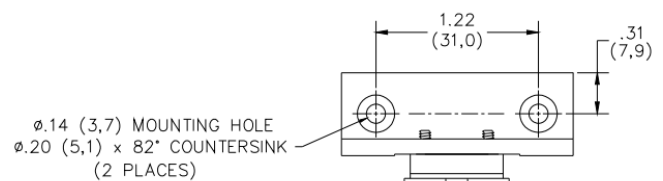
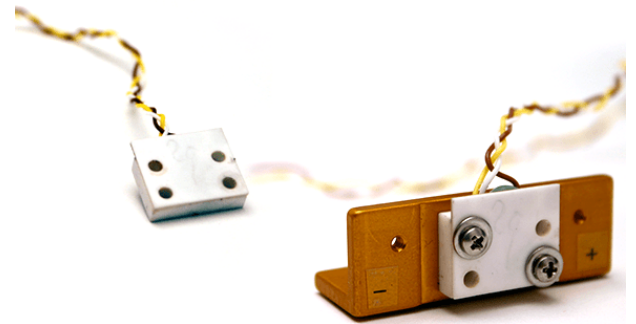
84064-2/59579-2

Wide-Angle Ceramic Tilt Sensor

The Model 84064-02 Wide-angle Ceramic Tilt Sensor is a high-precision electrolytic tilt sensor with wide dynamic range. Units come complete with Aluminum mounting bracket for easy installation. Order without mounting bracket as the model 59579-02 (performance is the same). Total range is $\pm 80^\circ$; linear range is $\pm 60^\circ$. All 84064-02 and 59579-02 Ceramic Tilt Sensors include calibration over $\pm 50^\circ$ when ordered with Jewell electronics (or specify special/custom calibrated ranges on order). Use the 84064-02 and 59579-02 sensor for wide-angle sensor applications where high performance and linearity over range are key.



Dimensions: in [mm]



PERFORMANCE SPECIFICATIONS

PERFORMANCE

VERSION	Model 84064-02 and 59579-02 Wide-angle Ceramic Sensors
TOTAL RANGE (°)¹	±80°
LINEAR RANGE (°)	±60°
NONLINEARITY (%FRO)² max	1% half span (2% full span)
NONREPEATABILITY	0.02°
RESOLUTION	0.001°
TIME CONSTANT	0.15 sec
Kz TEMP COEFFICIENT (°/C)	±3.5 μradians/°C (typical)
Ks TEMP COEFFICIENT (%/°C)	0.04%/°C (typical)

ELECTRICAL & ENVIRONMENTAL

OPERATING TEMPERATURE RANGE	-50°C to +125°C
STORAGE TEMPERATURE RANGE	-75°C to +150°C
WEIGHT	84064-02 = 24g ; 59577 = 5g
MATERIALS	Ceramic sensor, gold anodized Al, Teflon lead wire
SENSOR EXCITATION	Use with any Jewell Instruments signal conditioner

NOTES:

1. Custom ranges available on request
2. Nonlinearity is specified as variation around the best straight line from null to full-range output

Specifications are subject to change without notice due to continued product development

ORDERING CODE

MODEL NO.	DESCRIPTION
84064-02	Wide-angle Ceramic Tilt Sensor Assembly, ±80° total range (±60° linear), with Mounting Bracket
59579-02	Wide-angle Ceramic Tilt Sensor (bare), ±80° total range (±60° linear), no Mounting Bracket