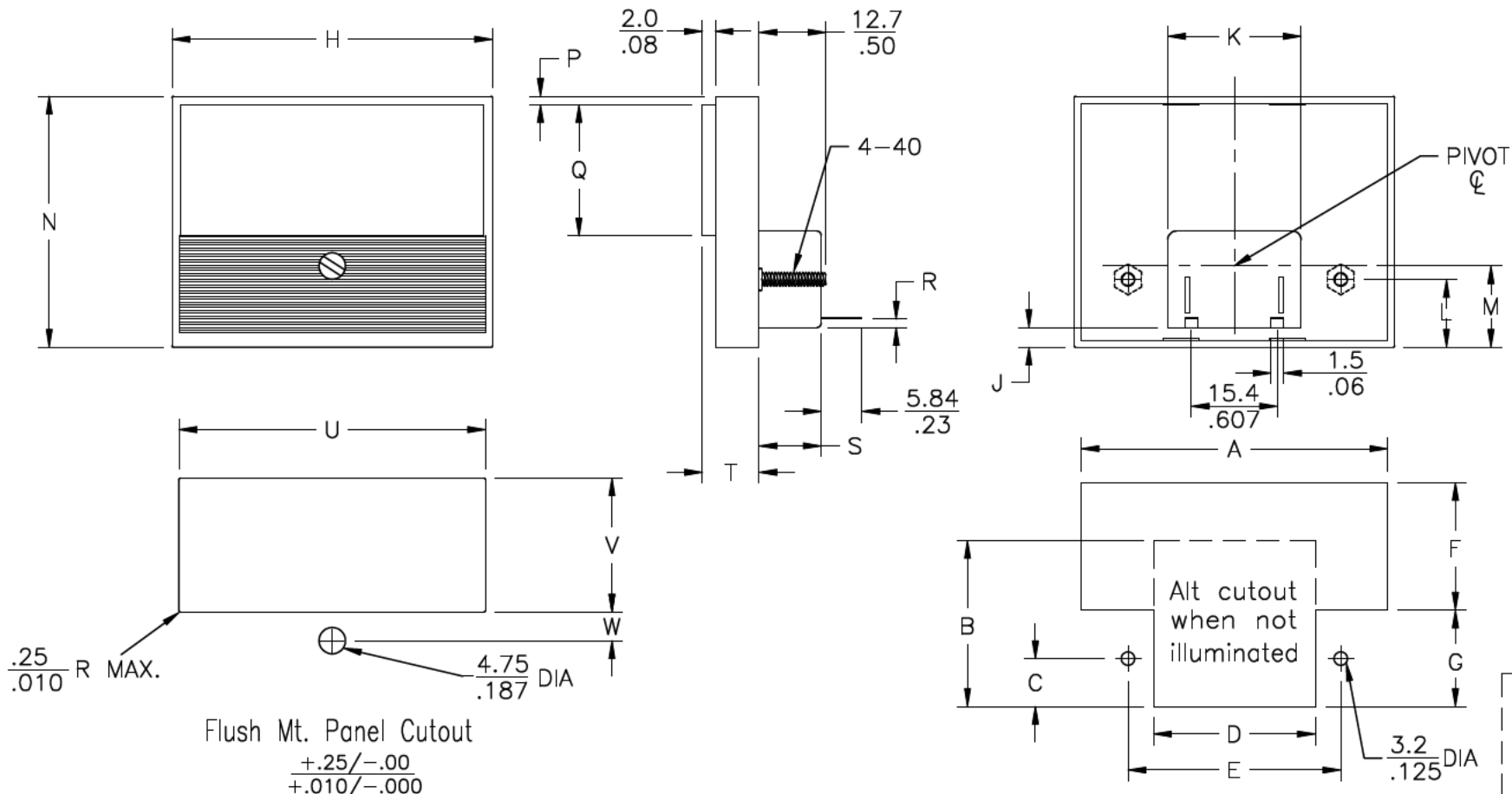


1MAS, 2MAS, 3MAS Series

DWG. NO. "M" SERIES

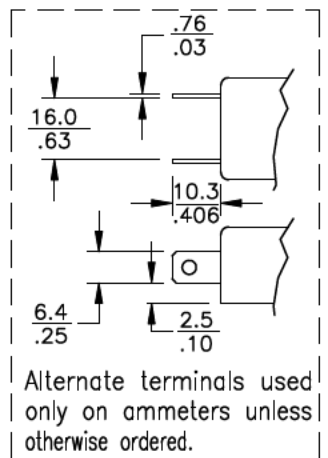


Flush Mt. Panel Cutout
 $\frac{+.25}{+.010} / \frac{-.00}{-.000}$

Surface Mt. Panel Cutout

DIMENSIONAL DATA 1MAS, 2MAS, 3MAS SERIES

	A	B	C	D	E	F	G	H	J	K	L	M	N	P	Q	R	S	T	U	V	W
1MAS	mm. 54.86	32.00	8.89	28.57	38.10	22.66	18.03	57.4	3.51	23.88	12.2	14.55	45.0	1.52	23.49	1.27	12.7	10.2	54.61	23.75	5.26
	in. 2.160	1.260	.350	1.125	1.500	.892	.710	2.26	.138	.940	.480	.573	1.77	.060	.925	.050	.500	.400	2.150	.935	.207
2MAS	mm. 73.41	36.96	8.89	41.27	50.80	31.24	18.03	76.4	5.71	23.88	14.5	16.76	58.2	1.52	32.00	1.27	12.2	10.7	73.79	32.26	7.75
	in. 2.890	1.455	.350	1.625	2.000	1.230	.692	3.01	.225	.940	.570	.660	2.29	.060	1.260	.050	.480	.420	2.905	1.270	.305
3MAS	mm. 90.93	43.43	14.83	53.97	63.50	39.12	30.74	94.7	8.23	23.88	16.9	19.28	73.7	1.80	40.26	1.27	11.9	10.9	91.44	40.51	12.10
	in. 3.580	1.710	.584	2.125	2.500	1.540	1.210	3.73	.324	.940	.665	.759	2.90	.070	1.585	.050	.470	.430	3.600	1.595	.476



Alternate terminals used only on ammeters unless otherwise ordered.

TOLERANCE UNLESS SPECIFIED	
RAW MATERIAL - COMMERCIAL STANDARD	
USED ON	NEXT ASSY
DIMENSIONS ARE IN INCHES.	
MATERIAL	
FINISH	

THIS DRAWING COVERS A PROPRIETARY ITEM AND IS THE PROPERTY OF JEWELL INSTRUMENTS, LLC. THIS DRAWING IS NOT TO BE COPIED OR USED WITHOUT PERMISSION.

"M" SERIES
 1", 2", 3"
 OUTLINE
 SCALE NONE
 EPA NO. 11229

Jewell
 INSTRUMENTS, LLC.
 MANCHESTER NEW HAMPSHIRE
 DWG. NO. "M" SERIES
 CAT. NO.
 CODE 33005